



47 Westleigh Avenue, SW15 | Asking Price £635,000



TUCKERMAN
ESTATE AGENTS
PROPERTY PROFESSIONALS

Westleigh Avenue, Putney, London

A stunning two bedroom, two bathroom apartment with private garden and secure parking. Perfect for first time buyers, young families, or buy-to-let investors.

Description

Situated on the first floor, the property boasts a large open plan living/dining room with a fully fitted contemporary kitchen and a small office station for those who work from home. The master bedroom has a walk-in wardrobe and en-suite bathroom. There is a further double bedroom and family bathroom suite. The reception room and second bedroom have direct access to the beautiful West facing private garden. Block benefits include video entry phone and secure allocated parking space.

Location

Linnet Court is conveniently situated on Westleigh Avenue, within easy reach of the vast array of shops, bars and restaurants that Putney High Street has to offer. In addition, the property is a short walk from the beautiful green spaces of Putney Heath and Richmond Park. Putney Rail Station (Mainline) and East Putney (District Line) provide good transport, as do the numerous bus routes along Putney Hill.

EPC

Rating B





Westleigh Avenue, Putney, London

null

Asking Price: £635,000

Furnishing: null


Available From:

Local Authority: London Borough of
Wandsworth

Council Tax Band: E

Approximate Gross Internal Area:
810.00 sq ft

Energy Efficiency Rating

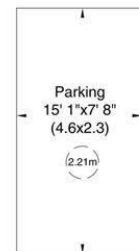
	Current	Potential
<i>Very energy efficient - lower running costs</i>		
(92 plus) A		
(81-91) B	83	83
(69-80) C		
(55-68) D		
(39-54) E		
(21-38) F		
(1-20) G		
<i>Not energy efficient - higher running costs</i>		
England & Wales	EU Directive 2002/91/EC	

Linnet Court, 47 Westleigh Avenue, SW15

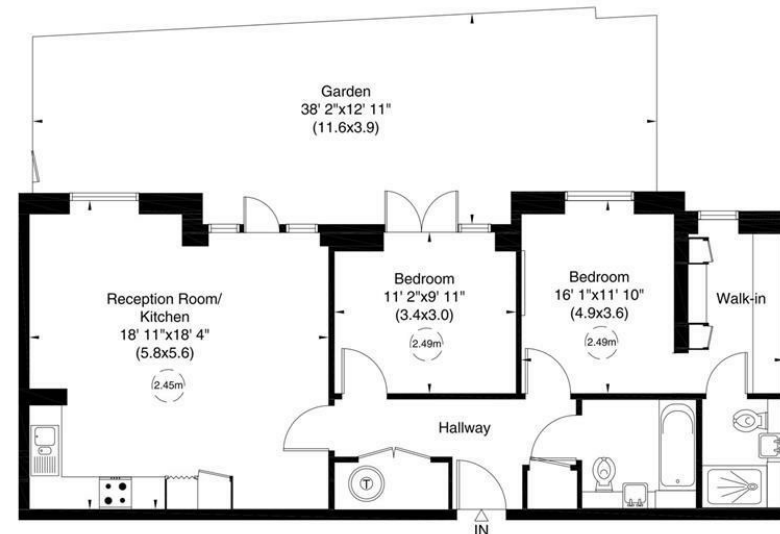
Gross internal area (approx.)

75 Sq m (810 Sq ft)

For identification only, Not to Scale



Ground Floor



First Floor

Not to scale, for guidance only and must not be relied upon as a statement of fact. All measurements and areas are approximate only (and have been prepared in accordance with the current edition of the RICS Code of Measuring Practice).

Agents Note: Whilst every care has been taken to prepare these sales particulars, they are for guidance purposes only. All measurements are approximate are for general guidance purposes only and whilst every care has been taken to ensure their accuracy, they should not be relied upon and potential buyers are advised to recheck the measurements

020 7222 5510

info@tuckermanresidential.co.uk

52 Moreton Street, London, SW1V 2PB

www.tuckermanresidential.co.uk

TUCKERMAN
ESTATE AGENTS
PROPERTY PROFESSIONALS